

# COVID-19 HEALTH & SAFETY PROCEDURES

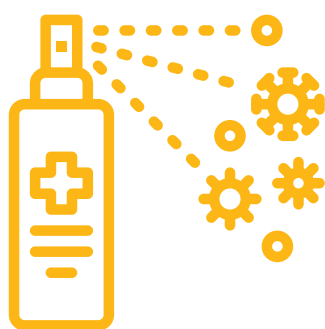
At One Hope United, we are working to protect our families and staff by following all procedures outlined in the Governor's **Restore Illinois Licensed Day Care Guidance**. In accordance with these guidelines, we have implemented the following at all of our centers:



1

## PPE OPERATIONAL PLANNING & FACE COVERINGS

Detailed plans for providing PPE at each center and for proper PPE usage training for staff have been implemented. Additionally, to slow the spread of COVID-19, all staff are required to wear face coverings. Whenever possible, children over the age of 2 are encouraged to wear face coverings.



2

## CLEANING & SANITATION

One Hope United staff have implemented extensive regular sanitation practices. All high touch surfaces including, but not limited to, doorknobs, toilet flush handles and sink handles are cleaned every two hours. Additionally, all rooms are cleaned and sanitized between use by different groups.



3

## RISK MANAGEMENT PLANNING

One Hope United has enacted a plan to administer daily health checks for all persons entering the center, including exclusion policies for children and staff with temperatures of 100.4 degrees Fahrenheit or higher. A communication plan is in place for notifying parents/guardians of positive COVID-19 cases in each facility.



4

## DECREASED CLASS SIZE & INTERACTION

At all centers, class sizes have been reduced to a maximum of 8-15 children depending on age. All children must remain with the same teacher to minimize interaction between children/staff at the center. Classes will not be combined at any time, including on playgrounds. Staff that do "float" between classrooms must use hand sanitizer, wash their hands, and change PPE between interactions.



5

## DISCHARGE OF SICK CHILDREN/STAFF

Per state guidelines, if a child or staff member is diagnosed with COVID-19, they are not to return to the child care facility until ALL three of the following are met: 1) they are free from fever without the use of fever-reducing medications for at least 72 hours. 2) Individual's symptoms, including cough, have improved. 3) It has been at least 10 days since the onset of the individual's illness.

### Additional Questions?

Our center directors are happy to answer your health/safety questions!

[onehopeunited.org/earlylearningcenters](https://onehopeunited.org/earlylearningcenters)