



LILA AND THE LABRADOR

CHECK OUT
THE NEW
WISHBOOK
ITEMS FOR
2020-2021!

WISH BOOK

Make a real
difference in lives
like Lila's.

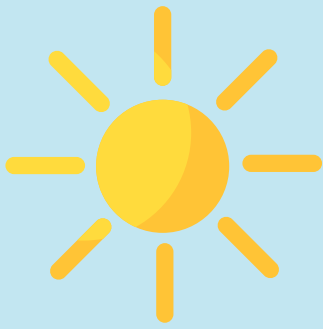
Learn more on pages 10-11.



Tania slides down her favorite tall blue slide on the park playground and sticks the landing.

“I love field day!” she shouts as a smile stretches across her face.

Field day is Tania’s favorite day of school because her teacher, Miss Hope, takes the entire class to the park for a day filled with hop-scotching, tag-playing, three-leg racing fun!

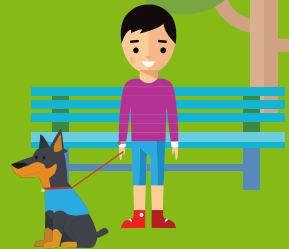


Across the park, Tania sees a big black dog wearing a cool blue vest.

Tania runs to Miss Hope and asks, “Miss Hope! Can you take me to pet that dog across the park?”

Miss Hope smiles. “That’s a cute dog Tania, but that dog’s vest tells us that she’s at work with her owner and we shouldn’t disturb them.”

Tania is confused and asks, “How can a dog be at work?”



“That’s an emotional support animal, Tania. That dog, and other animals like her, help their owners feel better when they have sad thoughts or are scared. As much as we may want to pet her, we should respect their space,” Miss Hope tells Tania.

Tania’s smile disappears as she thinks about what Miss Hope has taught her.

Miss Hope grins and says, “But guess what, Tania? We are about to start the three-legged race. I know that’s your favorite!”



Tania's eyes light up with excitement as she runs to find her best friend, Lila.
Lila and Tania are always partners in the three-legged race.

Tania finds Lila sitting on her favorite swing with a sad look on her face.

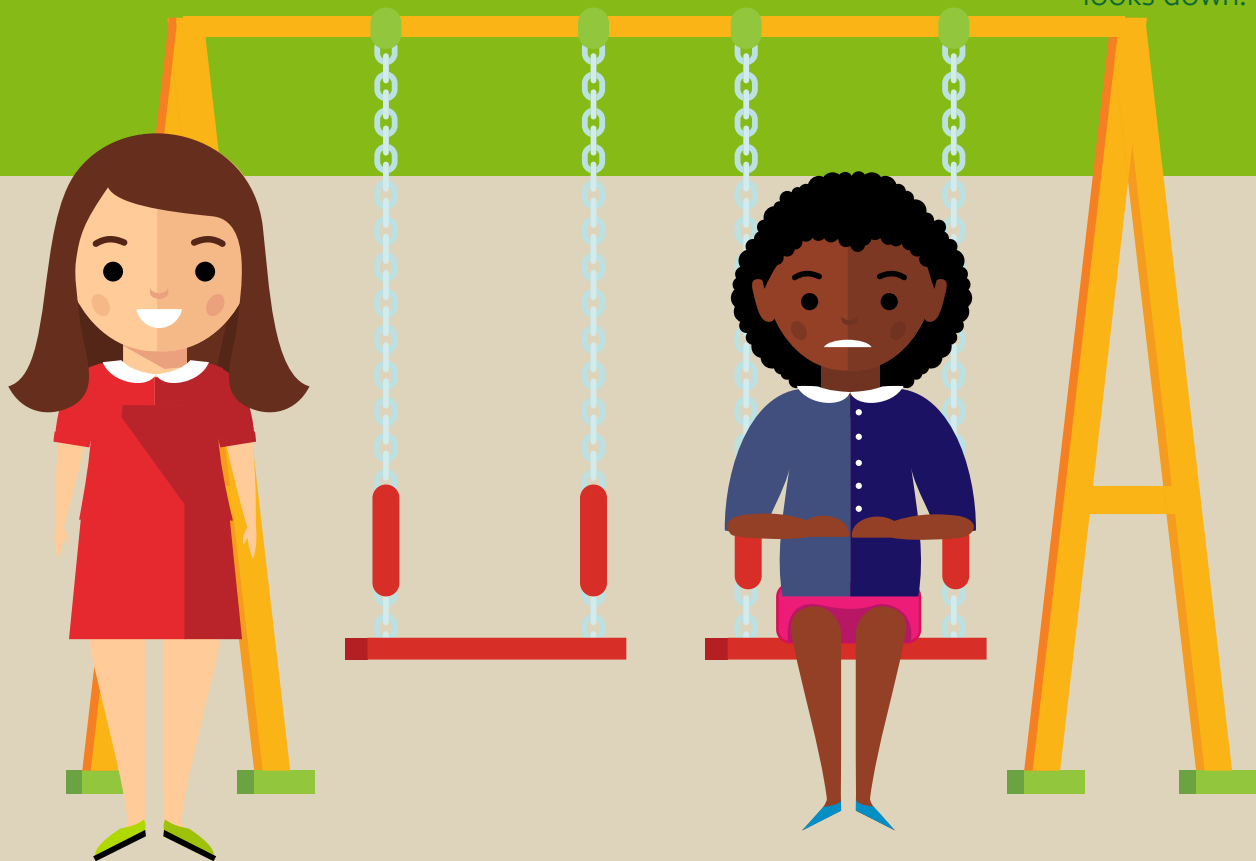
Lila just moved out of Friendship Home to live with her grandparents. While Lila loves her grandparents very much, living in a new home away from her friends has been a big change for her.

"There you are Lila! Are you ready to win the three-legged race together?" Tania asks Lila.

Lila quietly responds, "I'm not sure I want to race right now Tania..."

"But we are always partners! What's the matter?" Tania asks.

"I'm just not feeling up to it. I'm sorry if I'm making your field day sad," Lila says as she looks down.



Tania realizes that her friend is feeling sad and sits on the swing next to Lila.

“It’s okay Lila. I can swing here with you instead.”

Seeing how Tania is willing to spend time with her instead of playing her favorite field day game reminds Lila how much Tania cares about her. Lila decides to tell Tania about her new home with her grandparents and how she is feeling alone there.

Tania wishes she could help Lila feel less alone. Suddenly she remembers the emotional support dog she saw earlier in the park!

After field day is over, Tania finds Miss Hope with an idea about how to help Lila...



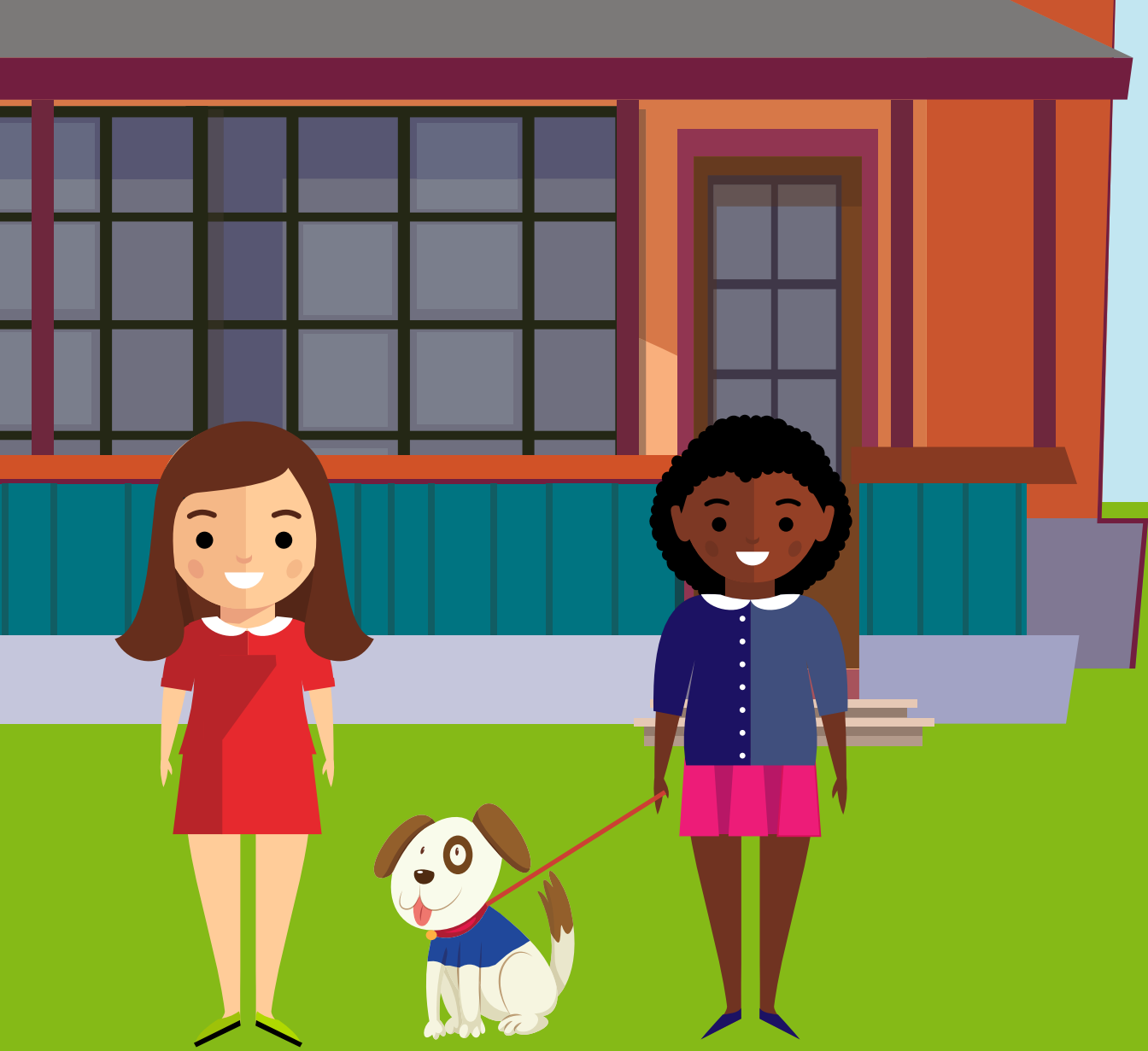


The next weekend, Lila calls Tania and asks her to come over to her new home.

Tania always loves playing with Lila, but she can tell by the excitement in Lila’s voice that something is different this time.

When Tania gets to Lila’s home, a white dog pokes his head out the front door and Lila walks behind him holding his leash. The dog is wearing the same cool vest as the dog in the park!
the park!

“Tania, meet Spot! Spot is my new emotional support dog!”



Tania is overjoyed and reaches out to pet Spot. Tania stops herself though, because she remembers what Miss Hope said about not petting emotional support animals while they are at work.

“Spot is so cute!” Tania exclaims.

Spot wags his tail and sits next to Lila.

Lila smiles and explains how Miss Hope talked to her grandparents and they all thought Spot could help her when she feels sad or alone.

“They also told me that you gave Miss Hope the idea on field day,” Lila tells Tania. “I felt so much better when you sat with me on the swing that day and now I have a friend that can always be with me, just like you were on field day!”

Lila reaches out and hugs Tania. Tania smiles feeling good that her friend feels less alone in her new home.



HELP MAKE MORE WISHES COME TRUE!

Choose from the items below.



\$1,000 can provide the whole Wishbook catalog and help change the lives of children and families in need. By contributing without limits, you help children and families live life without limits.



\$250 can provide a teen who has experienced trauma with programs and services that teach healthy ways of dealing with stressful situations and skills that can curb violence.



\$200 can provide a bed for a child in foster care.





\$150 can contribute towards emergency help for One Hope United children and families in crisis.



\$100 can help provide a child's Preschool education by helping to fund the cost of education for a family in need.



\$85 can provide a child who has experienced trauma with counseling services or other behavior health services like animal therapy, allowing them to begin the healing process.



\$75 can provide a classroom with activities and materials that help students explore Art, Science, Math, Technology, Music, and beyond!



\$50 can enable a foster parent to take a child on a fun bonding experience like going to a movie, visiting a theme park, or going out to dinner.



\$40 can help teens leaving residential programs or aging out of foster care to prepare for their independent lives by providing supplies like cookware, books, or other items for their new homes.



\$30 can provide activities like music, drawing tools, fidget toys, or weighted blankets that aid a child in managing painful and difficult emotions as they process stress and trauma.



\$20 can provide a child or teen in residential care with bedroom decorations, helping them feel at home.

**DONATE ONLINE AT
WISHBOOK.ONEHOPEUNITED.ORG**



FOR EVERY CHILD AND FAMILY,
LIFE WITHOUT LIMITS

onehopeunited.org



VISIT THE WISHBOOK WEBSITE FOR
UPDATED STORIES AND ACTIVITIES!
wishbook.onehopeunited.org



The story "Lila and the Labrador" is a work of fiction. Names, characters, businesses, places, events and incidents are either the products of the authors' imagination or used in a fictitious manner. Any resemblance to actual persons, living or dead, or actual events is purely coincidental.

Attribution for vector graphics within this document goes to: freepik, macrovector, brgfx, & pch.vector.